



Ground floor north suite

Burns House, Harlands Road, Haywards Heath, RH16 1PG

Ground floor suite in modern, purpose built office block. Allocated parking. 24 hour access. Dual aspect windows with good natural light

620 sq ft
(57.60 sq m)

- 24 hour access
- Allocated parking
- Close to Haywards Heath railway station

Ground floor north suite, Burns House, Harlands Road, Haywards Heath, RH16 1PG

Summary

Available Size	620 sq ft
Rent	£23 per sq ft
Rates Payable	£7 per sq ft
Rateable Value	£8,700
VAT	Applicable
Legal Fees	Each party to bear their own costs
EPC Rating	E (117)

Description

24 Hour access is available with a video entry-phone system. The building has a modern alarm and CCTV system for added peace of mind. There are well fitted cloakrooms, a kitchen and shower which are shared with the other occupiers of the building.

Internally, this suite is open plan and offers a bright working space with dual aspect windows to the front of the property. There are fitted carpets and a suspended ceiling with double glazed windows and central heating.

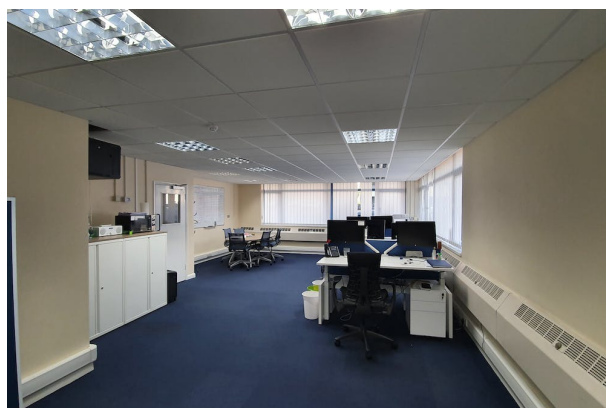
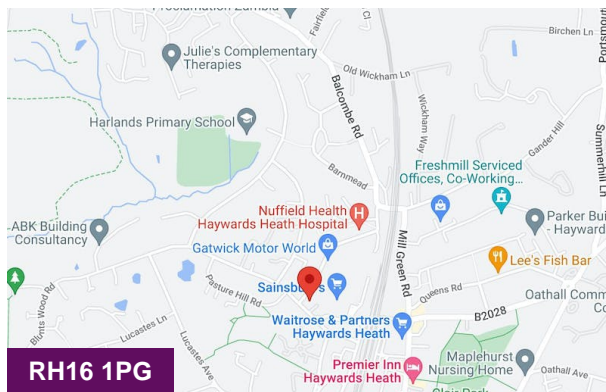
Location

This delightful suite is located on the north side of the ground floor in the popular Burns House development at the junction of Harlands Road and Burrell Road. The building is a short walk from Hayward Heath railway station and well served by local bus routes. For added convenience there are two parking bays allocated for the exclusive use of this suite.

Accommodation

The accommodation comprises the following areas:

Name	sq ft	sq m	Availability
Ground - North suite	620	57.60	Available
Total	620	57.60	



Viewing & Further Information



Richard Oldfield

01825762222 | 07860 634545

richard@oldfield-smith.co.uk



Sue Collett

01825762222 | 07792 303211

sue@oldfield-smith.co.uk